

weber    
connect

SMART GRILLING HUB



USER MANUAL

EnUS

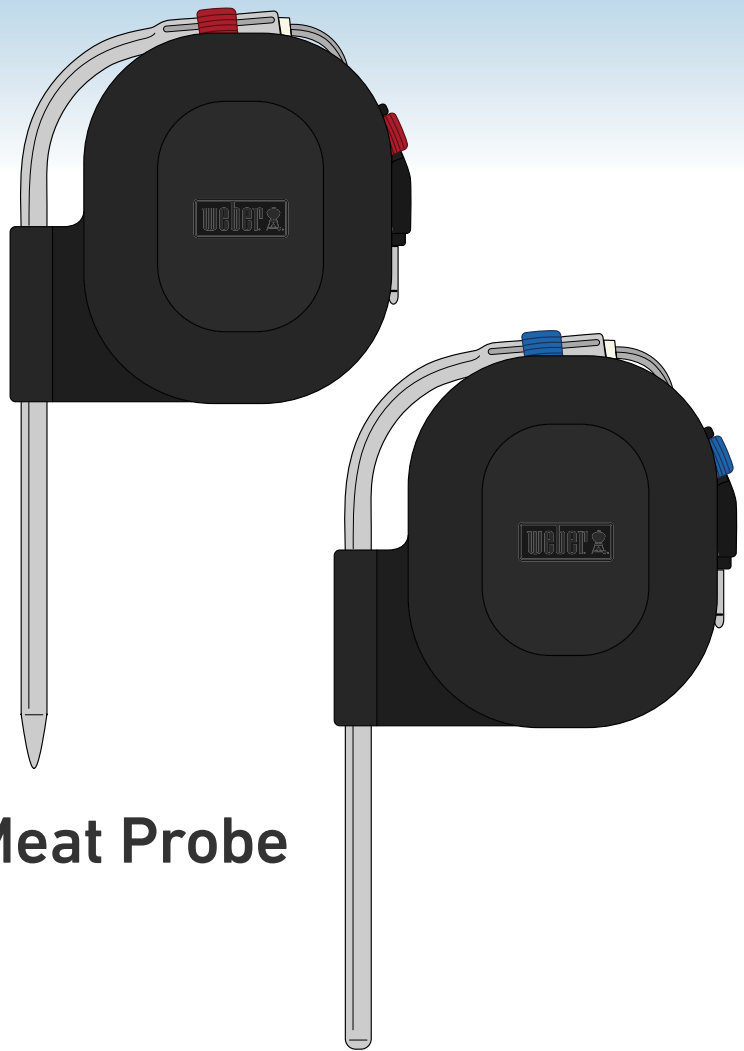
# TABLE OF CONTENTS

<b>Box Contents</b> . . . . .	<b>3</b>
<b>LED Indication Guide</b> . . . . .	<b>4</b>
<b>Quick Start Instructions</b> . . . . .	<b>5</b>
<b>Usage Tips</b> . . . . .	<b>14</b>
<b>Important Information</b> . . . . .	<b>18</b>
Intended Use . . . . .	18
Temperature Probe Use. . . . .	18
Disposal Requirements . . . . .	19
Technical Specifications. . . . .	19
FCC Compliance. . . . .	19
IC Compliance . . . . .	19
IFETEL Compliance. . . . .	19
<b>Battery Safety Information</b> . . . . .	<b>20</b>

# BOX CONTENTS

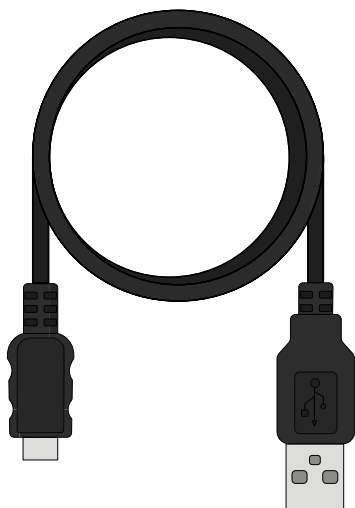


**Weber Connect  
Smart Grilling Hub**

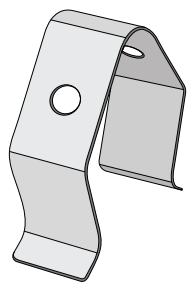


**Meat Probe**

**Ambient Probe**



**Charging Cable**



**Ambient Grate Clip**



**Quick Start Guide**

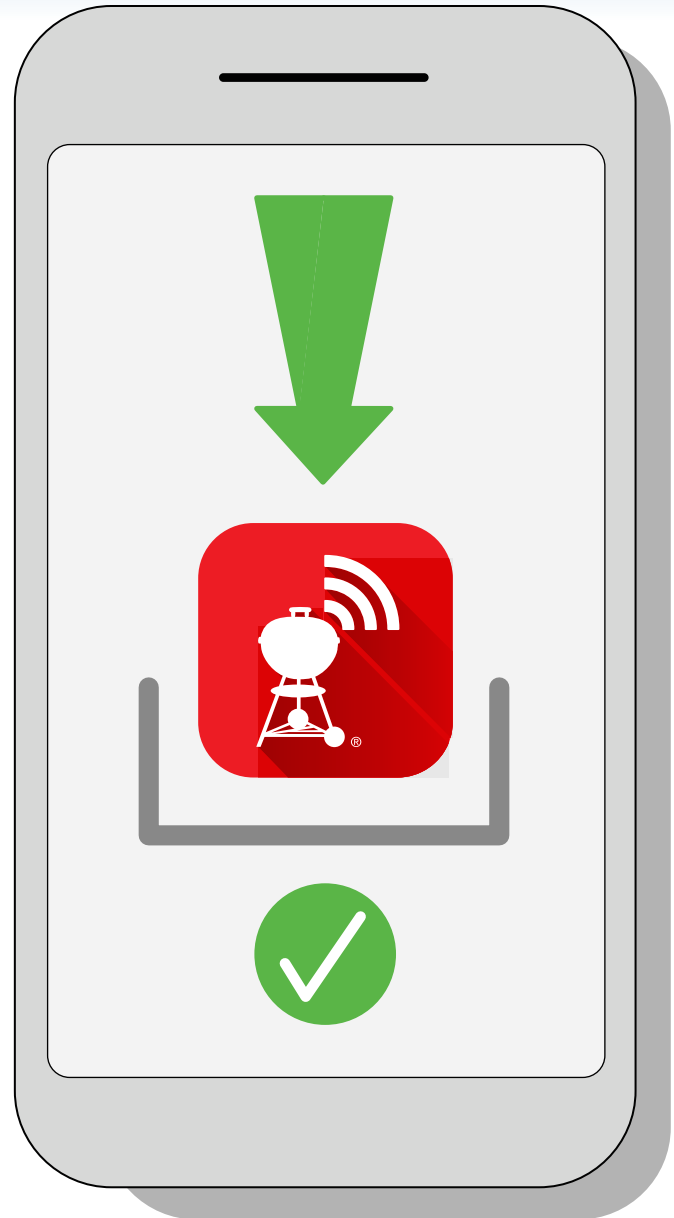
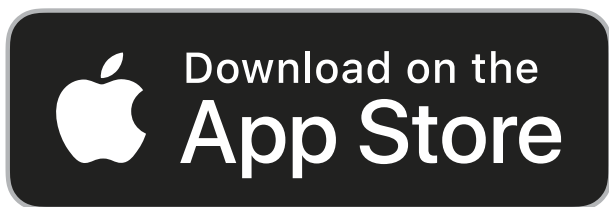


# LED INDICATOR INFORMATION



# QUICK START INSTRUCTIONS

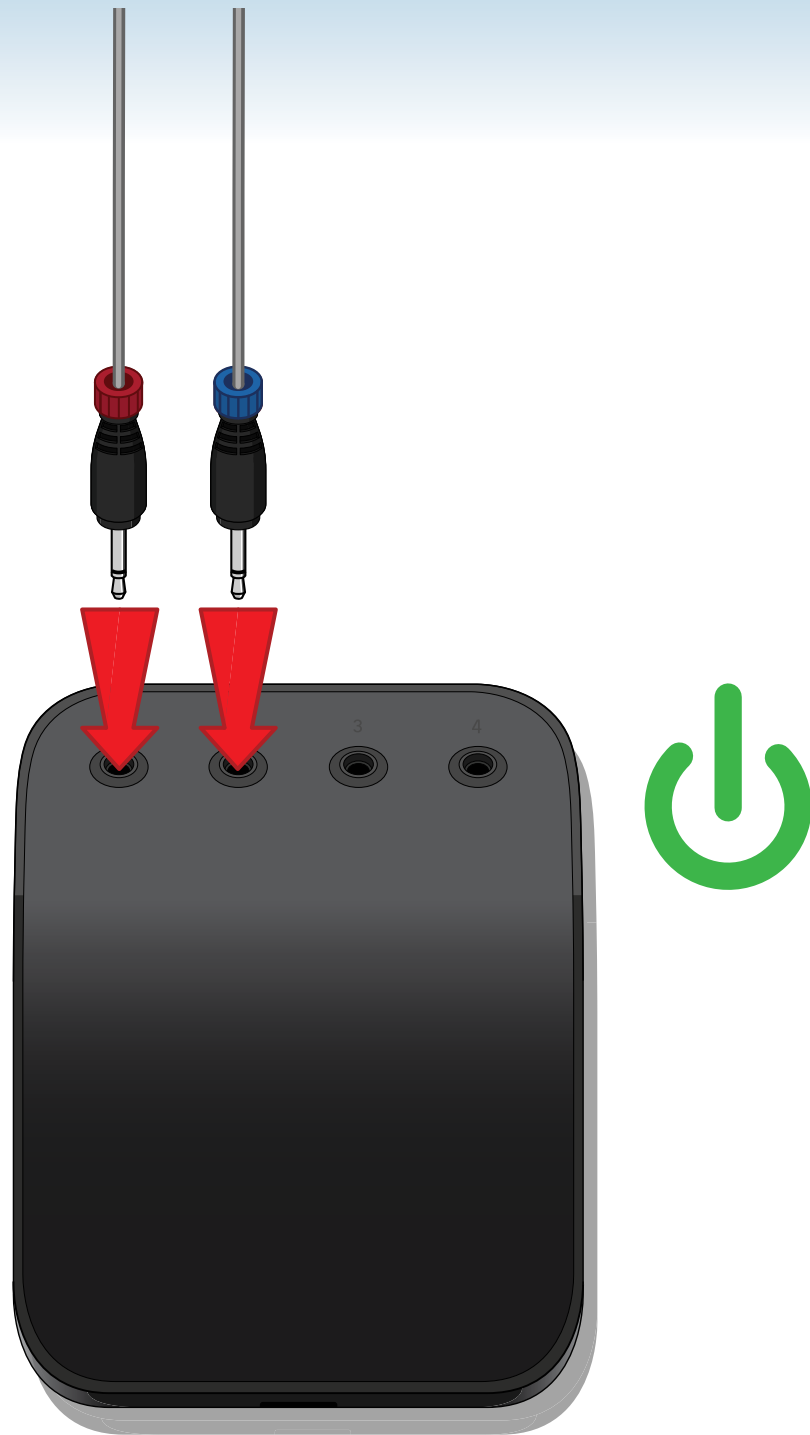
1



Download the Weber Connect App and make sure WiFi and Bluetooth are enabled in your smart device's settings.



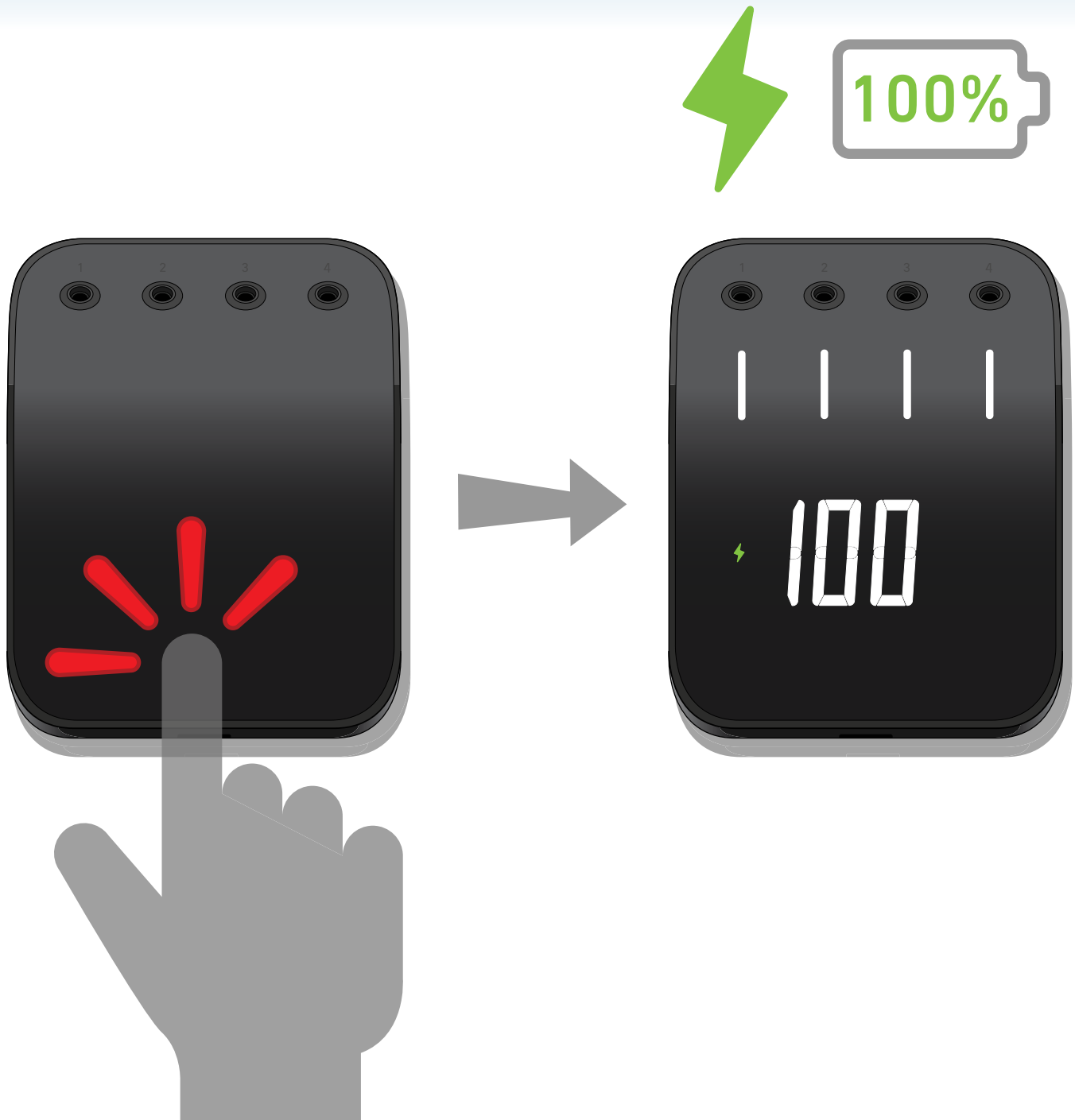
2



Remove protective plastic and cling and plug one or more probes into your Weber Connect Smart Grilling Hub to power the unit on.



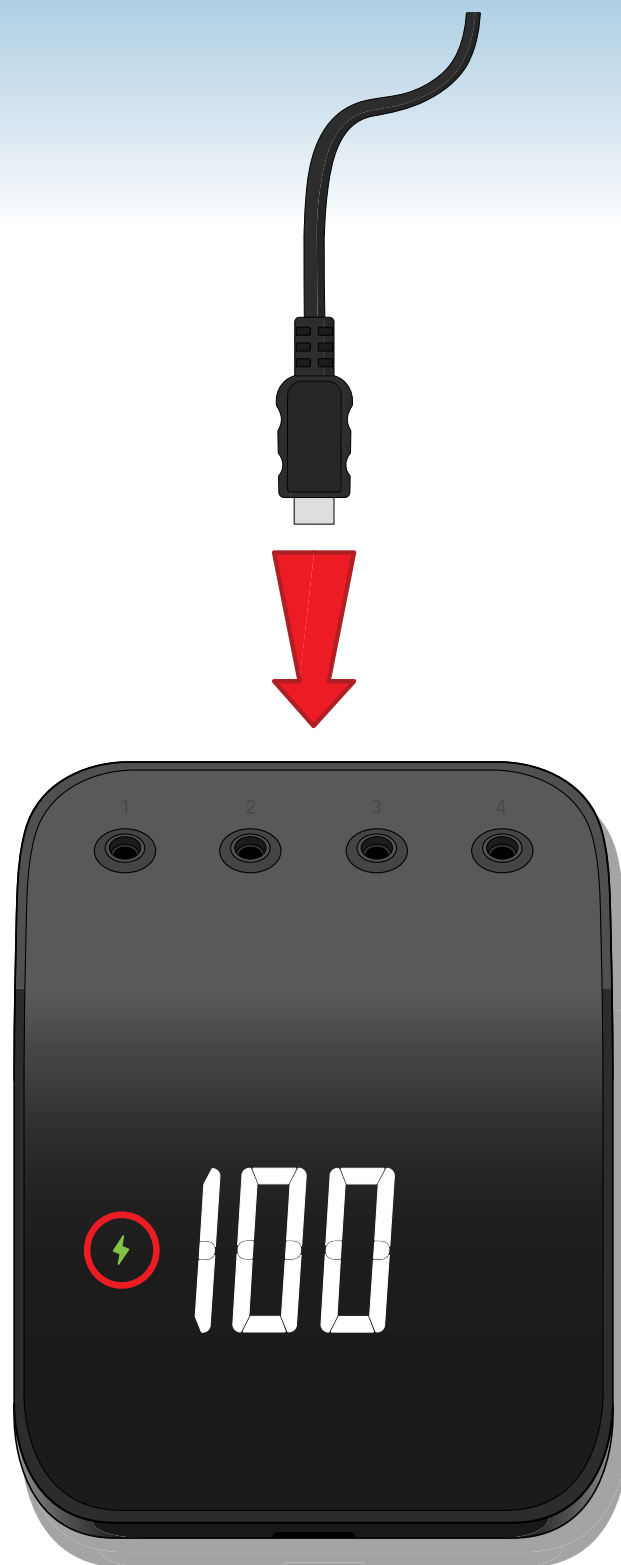
3



To check battery status of your Smart Grilling Hub, press down on device when no probes are connected.



4



When needed, charge your Weber Connect Smart Grilling Hub until the charge icon illuminates green.





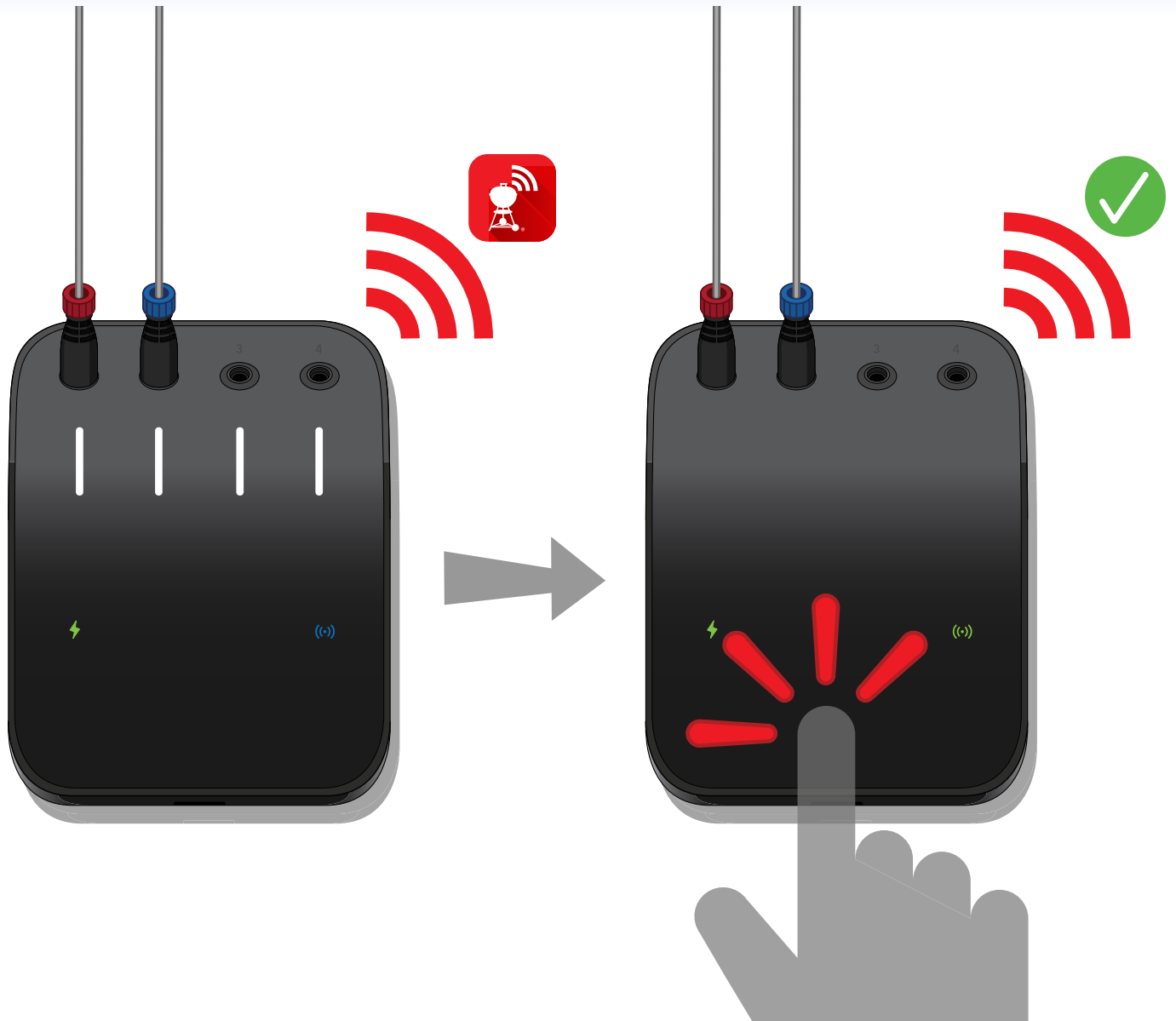
5



Open up the Weber Connect app on your smart device and make sure the Weber Connect Smart Grilling Hub is in range.



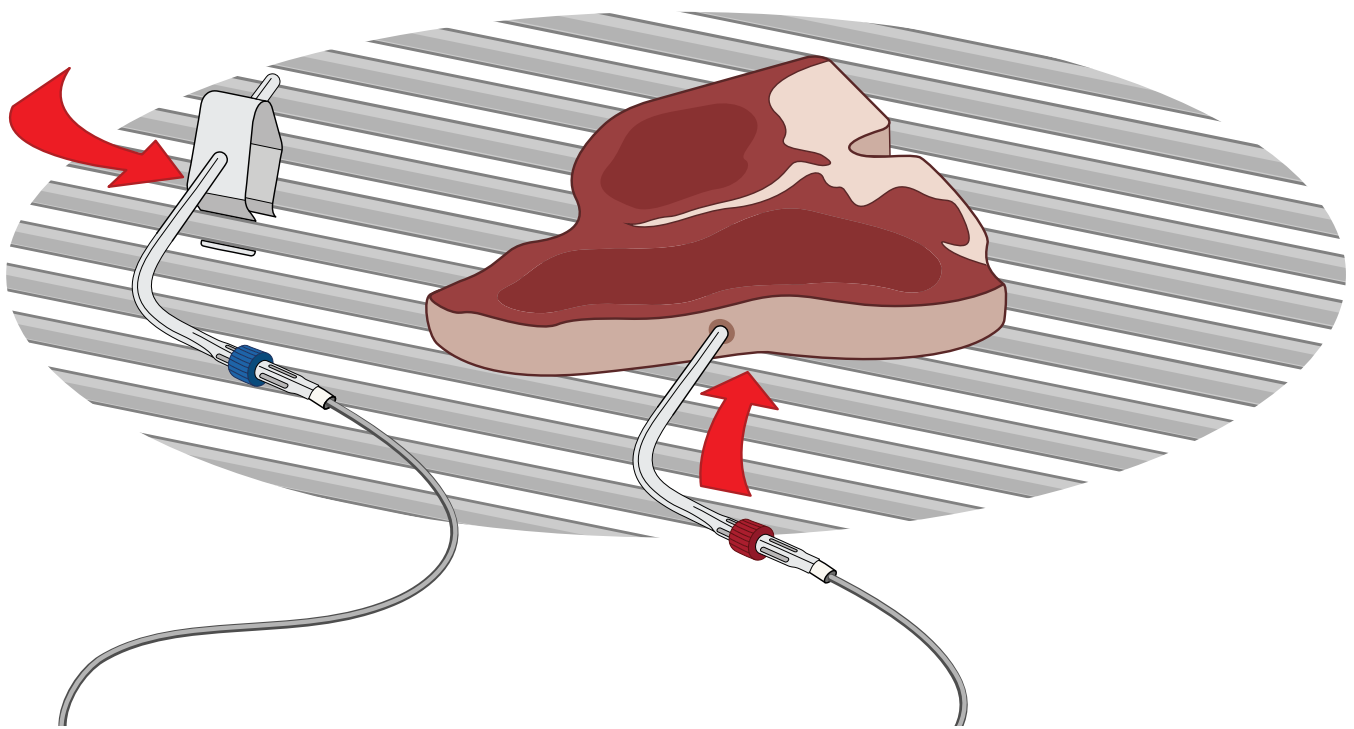
# 6



To finalize initial pairing with your smart device, press down on your Smart Grilling Hub when the unit displays all four probe indicator lights.



# 7



When using meat probes, ensure that the tip of the probe is inserted into the thickest section of the food, avoiding bones or fat.

When using ambient probes, ensure that the provided grate clip is properly secured to the cooking surface.



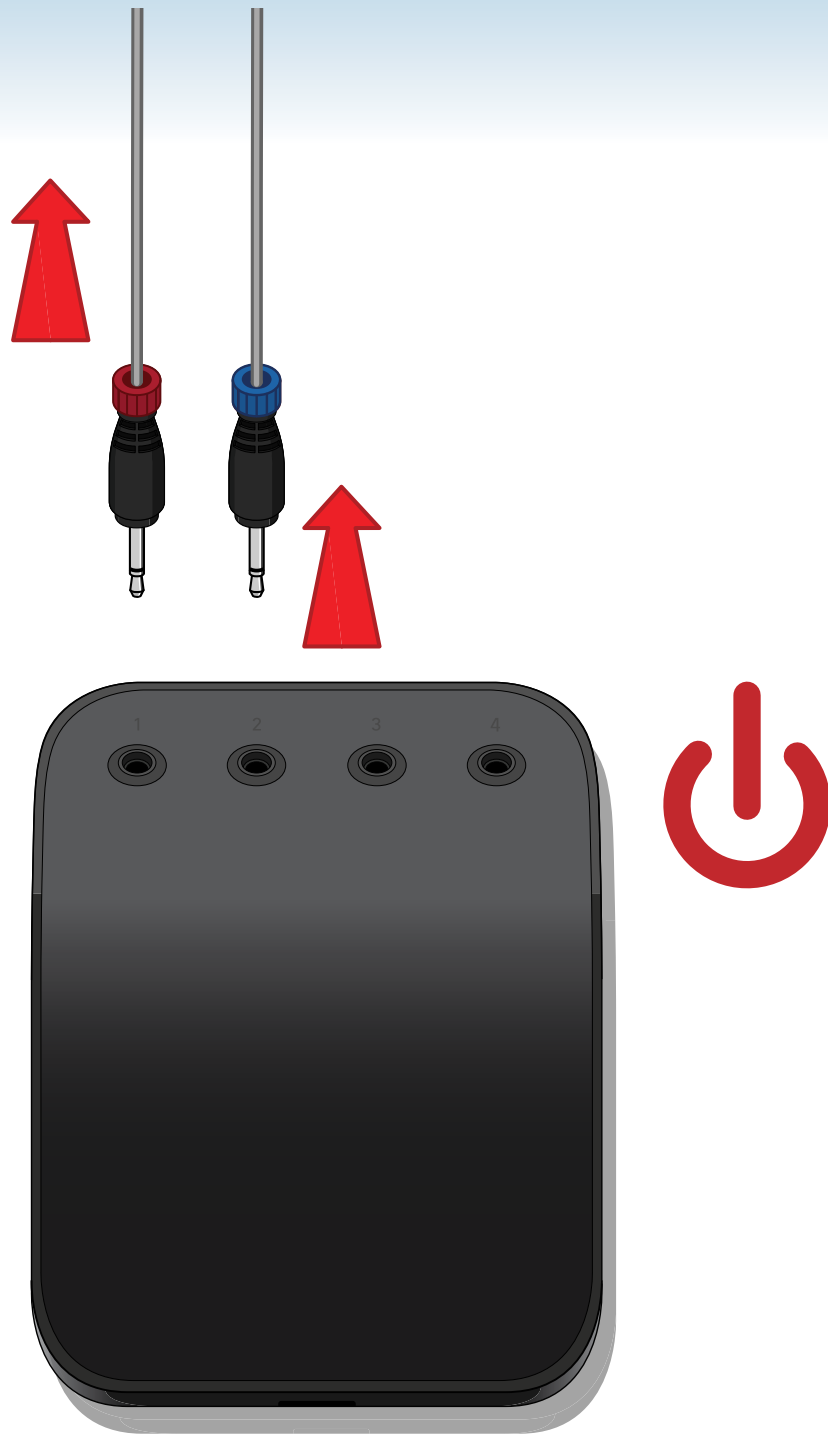
8



Follow step-by-step grilling instructions in Weber Connect App. Enjoy your meal!



9



After using your Smart Grilling Hub, unplug probes to power the device off and conserve battery life.



# HOT SURFACE WARNING



**Avoid placing the Weber Connect Smart Grilling Hub on hot surfaces such as the lid or hood of your grill.**

**Device is rated to 150°F**



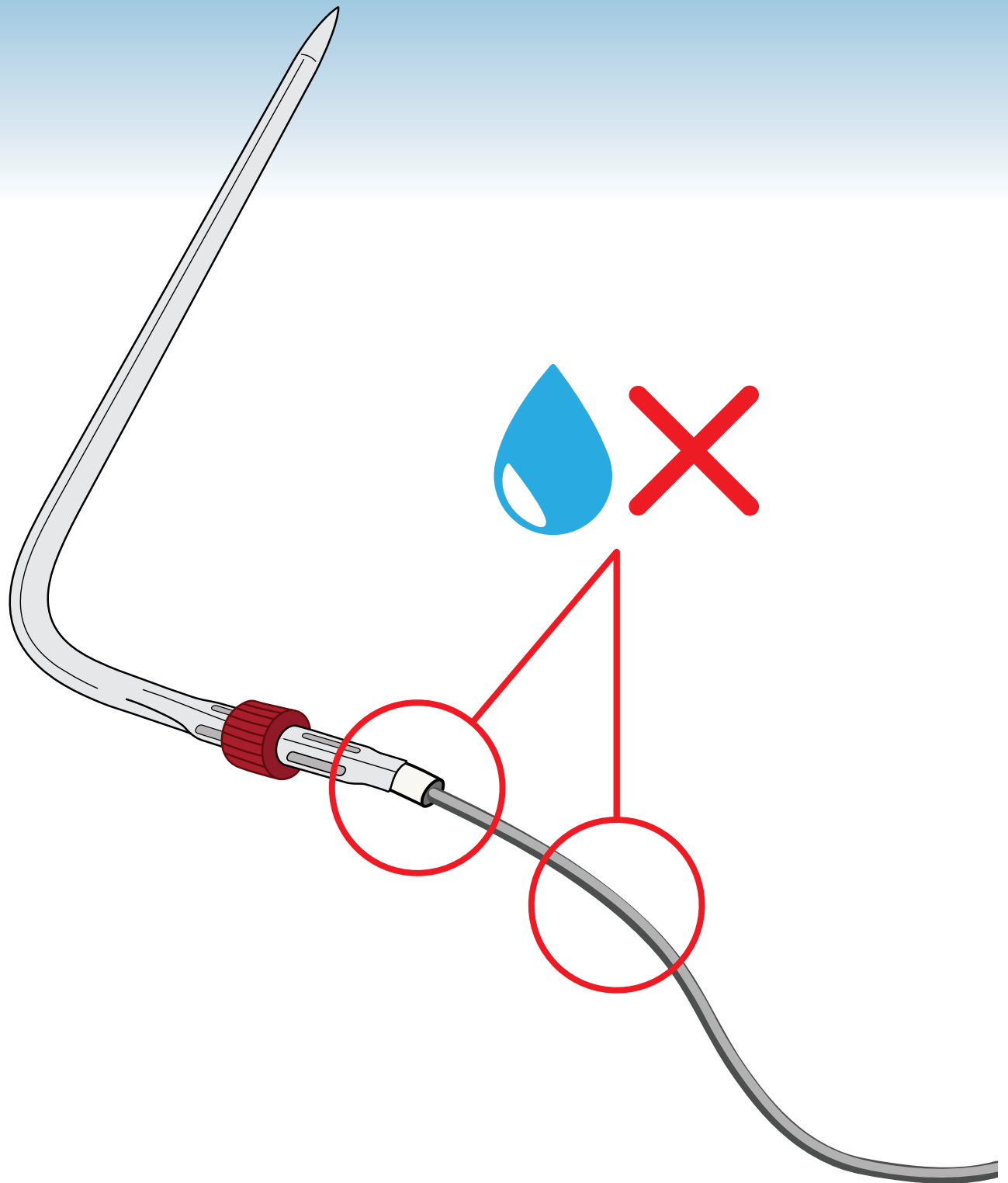
# Device Storage



When not in use, store the Weber Connect Smart Grilling Hub in a dry place at room temperature such as a an indoor cabinet or drawer.



# Washing Probes



When washing Temperature Probes, use caution to avoid exposing the probe wiring and the area where the probe and wire meet to water.

Never submerge probes in water.





# HARD RESET INSTRUCTIONS



If necessary, you can reset the Weber Connect Smart Grilling Hub by inserting a pin or similar item into the **Reset Port** and depressing for a few seconds.



# IMPORTANT INFORMATION

Visit [Weber.com/connectsupport](https://www.weber.com/connectsupport) to find out more about device compatibility, languages supported by the Weber Connect App, a full user guide with great grilling inspiration. Please read the full user guide – especially the safety information – before using the Weber Connect Smart Grilling Hub for the first time, and follow the instructions while using the device.

## Intended Use

Use this device only for measuring and monitoring the temperature of grilled items. Any use other than that described may cause damage. The manufacturer or retailer are not liable for damages arising from improper use. When using a Weber Connect Smart Grilling Hub, never leave your grill unattended and follow all instructions in your grill owners guide.

**Note:** Do not modify/alter Weber Connect Smart Grilling Hub

**Note:** Do not throw or impact Weber Connect Smart Grilling Hub

**Note:** Do not submerge Weber Connect Smart Grilling Hub

**Note:** Do not put Weber Connect Smart Grilling Hub in microwave

## Temperature Probe Use



**WARNING: Risk of Injury!** The temperature probes are very sharp. Please be careful when handling probes.



**WARNING: Risk of Burns!** Handling the temperature probes without hand protection will result in severe burns. The colored probe indicators are not intended to be touched with bare hands while using the grill as they are not heat insulated. Please wear heat protective gloves while using this product at all times to avoid being burned.

**Important Note:** When using probes, be sure to route wire where it will not be exposed to flames or temperatures exceeding 716° F (380° C). Avoid exposing probes to temperatures below -22° F (-30° C). Temperatures below -22° F (-30° C) or above 572° F (300° C) will not display in the app and will cause the probe to disappear from connection.

Clean the probes before first use. The probes are not dishwasher safe. Do not use chemicals or abrasive detergents to clean the probes. Wipe them down with a damp towel or cleaning wipe. Take care not to expose the probe's wiring or the area where the wiring meets the probe to liquid.

The probes are not waterproof and damage may result from water exposure. Never submerge the probes in water.



**WARNING: Battery Disposal!** Never dispose of batteries in an open fire. Always dispose of batteries in accordance with local laws.

**Note:** The Connect Smart Grilling Hub and batteries are not designed to withstand high heat. If the surface is too hot to touch, it's too hot for the Weber Connect Smart Grilling Hub and batteries.

**Note:** The device is not to be used by children or persons with reduced physical, sensory or mental capabilities.

**Frequency Range:** 2402.0 - 2480.0 MHz

**Output Power:** 0.0012 W

**FCC Compliance:** This equipment has been tested and found to comply with the rules for white space devices, pursuant to part 15 of the FCC rules. These rules are designed to provide reasonable protection against harmful interference. This equipment generates, uses and can radiate radio frequency energy and, if not installed and used in accordance with the instructions, may cause harmful interference to radio communications. If this equipment does cause harmful interference to radio or television reception, which can be determined by turning the equipment off and on, the user is encouraged to try to correct the interference by one or more of the following measures: (1) Reorient or relocate the receiving antenna. (2) Increase the separation between the equipment and receiver. (3) Connect the equipment into an outlet on a circuit different from that to which the receiver is connected. (4) Consult the manufacturer, dealer or an experienced radio/TV technician for help. Changes or modifications not expressly approved by Weber could void the user's authority to operate this device.

**IC Compliance:** This device complies with Industry Canada's licence-exempt RSSs. Operation is subject to the following two conditions: (1) This device may not cause interference; and (2) This device must accept any interference, including interference that may cause undesired operation of the device.

**IFETEL Compliance:** Operation of this unit is subject to the following two conditions: (1) this unit or device may not cause harmful interference, and (2) this unit or device must accept any interference, including interference that may cause undesired operation.

# BATTERY SAFETY INFORMATION



## Important Safety Instructions and Warnings for Lithium Ion (Li-Ion) Batteries

### General Guidelines and Warnings

- You must read these safety instructions and warnings before using or charging your Weber Connect Smart Grilling Hub.
- Li-ion batteries are volatile. Failure to read and follow the below instructions may result in fire, personal injury and damage to property if charged or used improperly.
- Li-Ion battery packs may explode and cause fire if misused or defective.
- Use only the charger supplied with your Weber Connect Smart Grilling Hub. Do not use a NiMH or NiCd charger. Failure to do so may cause fire, which may result in personal injury and property damage.
- Do not charge when room temperature is below 32F(0C) or above 113F (45C).
- If at any time you witness your Weber Connect Smart Grilling Hub starting to smoke while charging, discontinue the charging process immediately, disconnect the battery and observe it in a safe place for approximately 15 minutes. Observation should occur in a safe area outside of any building or vehicle and away from any combustible material.
- Never drop the unit.
- Do not charge the battery in presence of flammable liquids or gases.
- Do not expose the charger to rain or snow.
- Children should be supervised to ensure they do not play with the battery charger.
- Use caution to avoid puncture of the cell. Puncture of cells may cause a fire.

### Storage & Transportation

- Store unit at room temperature for best results.
- Do not expose battery pack to direct sunlight / heat for extended periods of time. Any exposure to heat can cause significant damage or fatal injury.
- Storing battery at temperatures greater than 140F (60C) for extended periods of time (more than 2 hours) may cause damage to battery and possible fire.

### Voltage, Capacity, Capacity in Watts:

- Voltage: 3.7V
- Capacity: 3.2Ah
- Capacity in Watts: 11.7 Wh



**Importado y Distribuido en México por:  
Weber-Stephen Products S.A. de C.V.**

ANATOLE FRANCE 139-139A  
Colonia. POLANCO III SECCION  
Del. MIGUEL HIDALGO  
CIUDAD DE MEXICO  
C.P. 11540

RFC: WPR030919-ND4

Teléfono: 01800-00-WEBER (93237)

**Imported by / importé par  
WEBER-STEPHEN (CANADA) COMPANY**

1 Roybridge Gate  
Vaughan, Ontario, CANADA  
L4H 4E6

The Bluetooth® word mark and logos are registered trademarks owned by Bluetooth SIG, Inc. and any use of such marks by Weber-Stephen Products LLC is under licence. Other trademarks and trade names are those of their respective owners.

